

# The Element

June 2024



### UNDERSTANDING AND MANAGING POTENTIAL PROJECT IMPACTS ►

Albemarle is conducting an Environmental and Social Impact Assessment (ESIA) to help understand the potential impacts of the proposed mine. The outcomes will help us develop management plans to minimize impacts and enhance benefits.



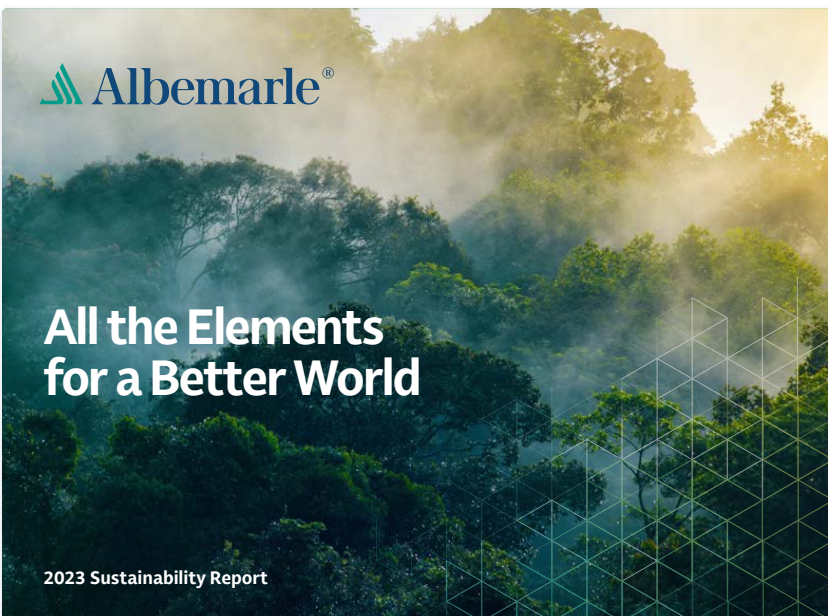
### OPEN HOUSE Q&A ►

Albemarle hosted a community open house on June 11. See some of the questions we received and their answers to gain a better understanding of the proposed project.



### GATHERING COMMUNITY INPUT ►

A draft scoping report is used to gather your feedback prior to finalizing the ESIA. During the scoping process, Albemarle identified and prioritized the key risks and potential impacts during the project's lifecycle—now we request your input.



## Albemarle's 2023 Sustainability Report

*Available Now ►*

Albemarle is proud to share our progress toward our yearly sustainability goals as we work to help build a more resilient world.

**Albemarle's Sustainability Report** provides an overview of our sustainability approach and commitments, as well as tracking our progress toward our sustainability targets. Structured around our sustainability framework topics of natural resource management; people, workplace and community; and sustainable value creation, we have focused our reporting on 2023's highlights and our progress toward achieving our goals and commitments.

**Sign up for future newsletters!** ►

**Visit the Albemarle Kings Mountain website** ►

# Understanding and Managing Potential Project Impacts

Albemarle is developing the proposed Kings Mountain Mine in line with the Initiative for Responsible Mining Assurance’s (IRMA) Standard for Responsible Mining. This standard is widely considered the most comprehensive and rigorous standard for assurance of responsible mining practices.

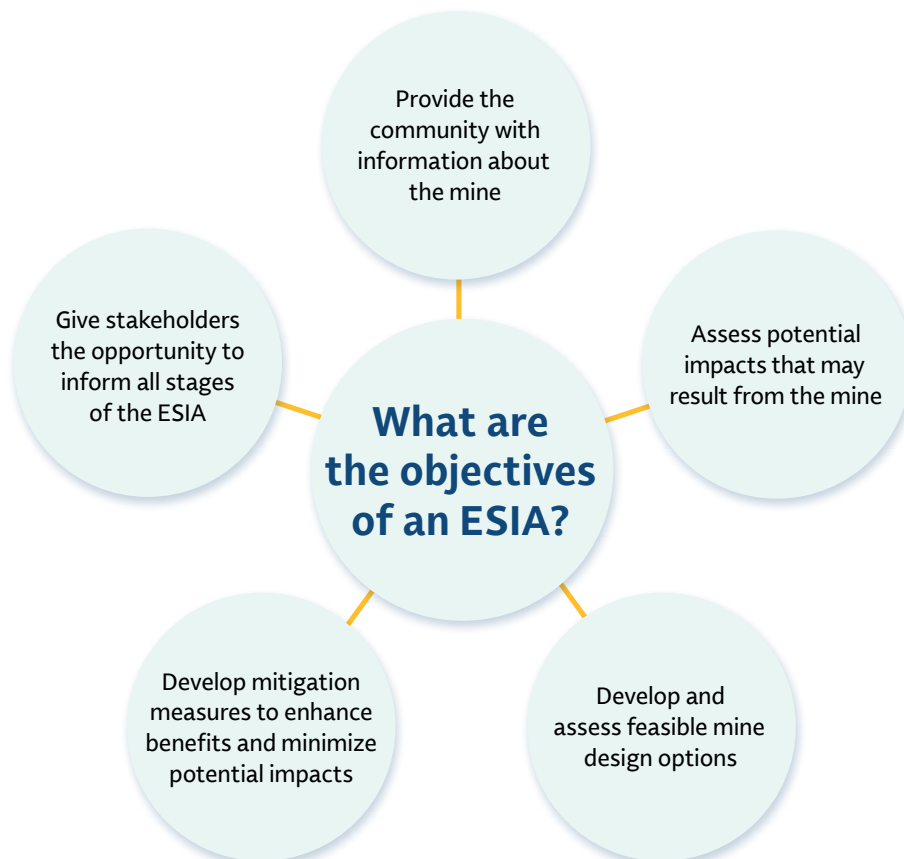
A key element of the standard is to complete an integrated Environmental and Social Impact Assessment, (ESIA), to help identify, understand and manage potential impacts from the mine.

Albemarle plans to use the outcomes of the ESIA to develop environmental and social management plans to minimize potential impacts and enhance benefits.

## WHAT’S INCLUDED IN THE ESIA?

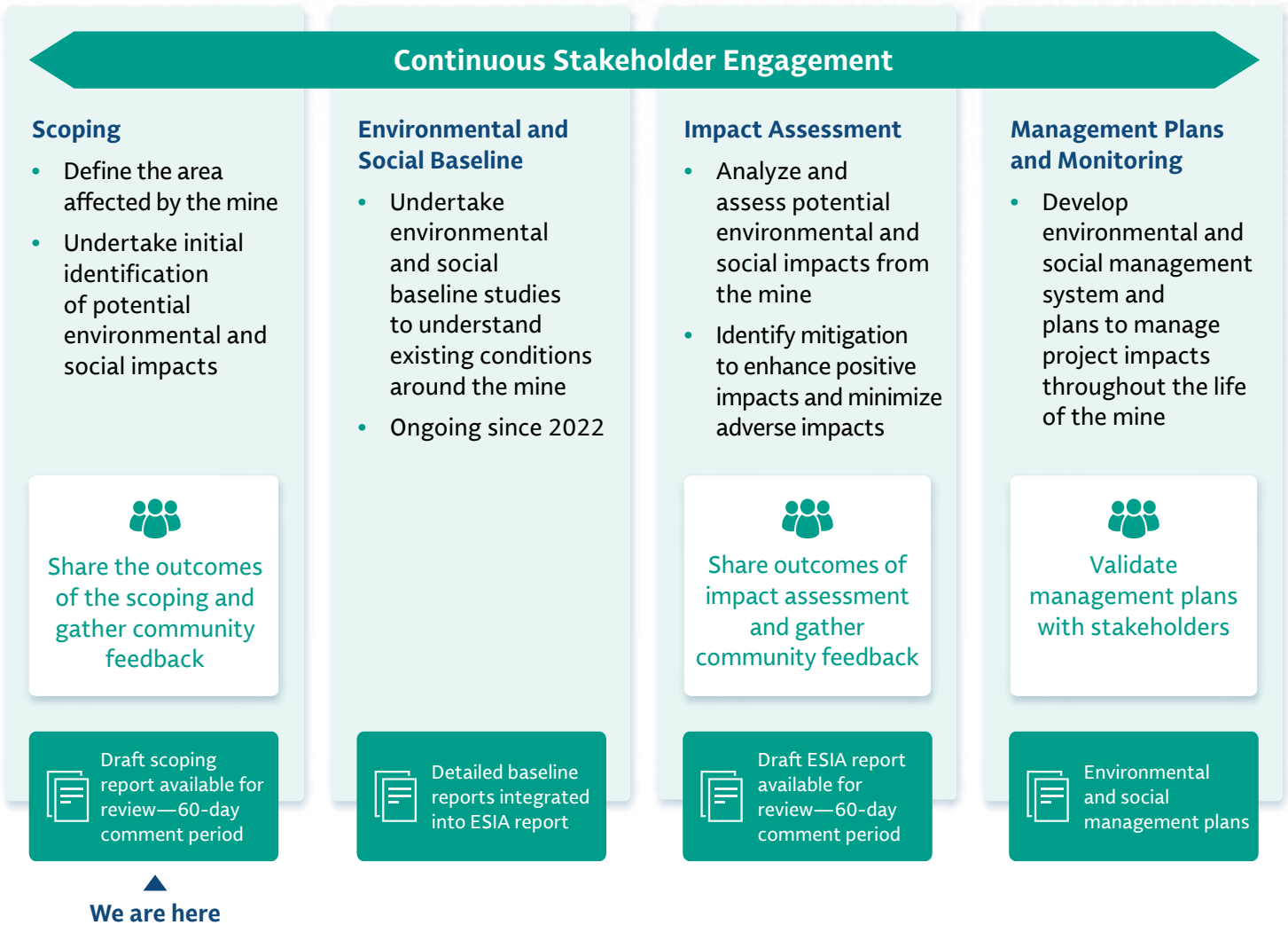
When we prepare an ESIA, we identify and assess potential impacts based on a detailed assessment of baseline environmental and social data. At a minimum, the ESIA will include an assessment of:

- Potential impacts on the physical environment such as air quality, noise, vibration and water
- Potential impacts on the biophysical environment such as wetlands, wildlife and plants
- Potential impacts on the human environment such as the local economy, community health and safety, cultural heritage, community services and infrastructure
- Potential cumulative impacts of the Kings Mountain Mine together with other planned developments in the area
- Impacts from unplanned events such as extreme weather events or accidents



# Understanding and Managing Potential Project Impacts (Cont.)

The ESIA process comprises four areas, with continuous stakeholder engagement throughout all four.



## Risks and Impacts in an ESIA

**Risks** refer to situations that may arise because of the project. For example, the risk of worker accidents during project work can be addressed by implementing effective health and safety protocols.

**Impacts** refer to the effects of the project on the environment. For example, removing natural vegetation, which is mitigated by restoring other areas of natural vegetation; or discharging effluents into a water body, which is avoided or minimized by treating the effluent to reach a water quality equal to or better than the receiving body.

# A Summary of the ESIA Draft Scoping Report

The scoping report is an initial step used to gather feedback prior to development of the Environmental and Social Impact Assessment (ESIA) report. One key outcome of scoping is to guide the remainder of the ESIA process to further evaluate the potential impacts and risks to environmental and social resources and receptors and to inform the development of avoidance, minimization, mitigation and management measures.

During the scoping process, Albemarle identified potential interactions between the proposed Kings Mountain Mine and environmental and social resources. Next, Albemarle prioritized the key risks and potential impacts of these interactions.

Key potential impacts and risks of concern which have been identified and will be further evaluated in the ESIA include:

- Increased local employment and local procurement that will positively impact the local and regional economy
- Exposure to dust, noise and vibration for receptors adjacent to the mine and along transport corridors
- Changes to water quality of rivers, lakes and other surface water bodies affected by construction and operation of the mine
- Changes to water quality of shallow or deep groundwater resources and associated impacts to water rights, changes in groundwater flow direction or levels
- Change in residence for homeowners and/or landowners whose property is purchased by Albemarle
- Potential impacts to tricolor bat habitat
- Changes to the existing visual landscape

- Increased traffic could impact community safety and strain road networks used as part of social infrastructure and services
- Changes in land use which could result in temporary and/or permanent changes in access to recreation, such as the use of the Gateway Trail

The ESIA will consider the results of the scoping process and any community feedback in prioritizing risks and potential impacts necessary for analysis. A final version of this scoping report along with the comments and responses report will be made available to stakeholders.

### HOW CAN YOU PARTICIPATE?

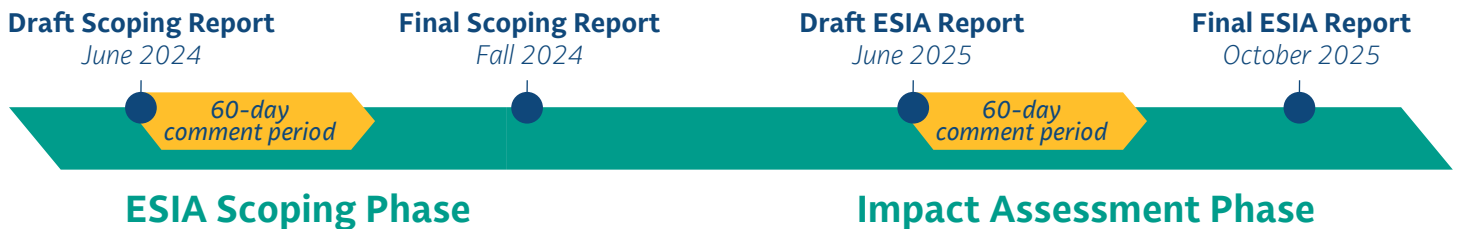
Community participation is essential to developing a robust ESIA. We value your feedback and invite you to participate. You will have until **August 12, 2024**, to review the draft scoping report and send us your feedback or questions on the report. Click below to access:

- Review the [ESIA Scoping Report Non-Technical Summary \(English\) / \(Spanish\)](#)
- Review the [ESIA Draft Scoping Report](#)
- Review the [ESIA Fact Sheet \(English\) / \(Spanish\)](#)

### PROVIDE YOUR ESIA-RELATED COMMENTS OR QUESTIONS ONLINE, BY PHONE, EMAIL OR IN PERSON:

- [Provide feedback to the ESIA](#)
- Email: [kmcommunity@albemarle.com](mailto:kmcommunity@albemarle.com)
- Phone: (704) 734-2775
- Mail or in-person: 129 West Mountain Street, Kings Mountain, NC 28086

## Assessment Timeline





# Questions from the *Community Open House*

Albemarle hosted a community open house at the H. Lawrence Patrick Senior Center on June 11. Attendees had the opportunity to ask questions about the proposed Kings Mountain Mine and gain a better understanding of the proposed project.

## **Q: Will the mine affect nearby water wells or streams?**

A: Albemarle has conducted detailed water studies and modeling of the area surrounding the site to predict flows within the project area for all mine phases. The rock surrounding and under the mine site does not store or transmit water very easily. The layer of rock, and other geologic features, act as barriers to groundwater flow to or away from the site.

Albemarle implements industry best practices for surface water management within the site. We monitor surface and groundwater with our extensive monitoring network and will continue that practice throughout the proposed mine's life. We do not anticipate impacts on the quality or quantity of surrounding groundwater resources.

## **Q: What about water scarcity? Will this affect the amount of water available to the community?**

A: The Kings Mountain Mine is designed to operate with a positive water balance, meaning the water supply used to support project operations will come from collected precipitation that is pumped and/or piped for storage in an onsite water storage basin. The project will only require external use of groundwater or municipal sources of water for drinking, fire protection and sanitary purposes.

## **Q: Will I be able to hear the noise, feel the vibrations or see the dust from blasting?**

A: Albemarle does not anticipate that noise and vibration will be significantly greater than existing background levels from the quarry next to our property. Landscaped berms and/or prefabricated noise barriers are designed to be used at certain locations throughout the site to help buffer adjacent properties.

A noise monitoring and mitigation plan is expected to be developed with results provided quarterly. A network of nine monitoring stations has been installed around the site to assess vibration and noise levels produced by the blasts and to confirm they are well below established thresholds.

## **Q: Will you be closing the Gateway Trail?**

A: Currently, the Gateway Trail runs along the top portion of the old mine pit on an easement granted to the trail by Albemarle. Because we expect a section of the current trail path will be too close to the potential extraction area, part of the trail will eventually close. However, as we continue to explore redevelopment of the Kings Mountain Mine, Albemarle is participating in planning discussions with the Gateway Trail Board of Directors, the City of Kings Mountain and Cleveland County to develop a plan for a new section of the Gateway Trail that aligns with the city's master plan for parks and recreation facilities.

Currently, there is no timetable for the trail to be affected by potential mining operations at the Kings Mountain site, and we expect the trail will continue to remain open to the public across Albemarle's property.

## **Q: Will I be able to see the mine?**

A: Albemarle plans to construct visual barriers, such as landscaped berms, at key points throughout the site that are designed to limit the view of the mine and its operations.



## Questions from the Community Open House (Cont.)

### Q: Are you hiring? What kind of jobs are available?

A: The project is anticipated to generate over 1,000 jobs during the mine's construction and more than 440 full-time, highly skilled jobs once the mine is operational.

### Q: In the presentation you showed an overpass. Will it be open to the public? What will it be used for?

A: This will be an overpass that will be used to transport materials across I-85 via a series of covered conveyors. The overpass will not be open to the public.

### Q: How big is the mine?

A: The proposed project includes approximately 1,200 acres of land. The mine pit is designed to be extended 900 feet to the southwest and deepened to 715 feet. The total size of the pit is expected to be 3,300 feet long, 1,800 feet wide and 715 feet deep.

### Q: How long will you be mining?

A: We are currently preparing to submit permit applications for 10 years of operation, however, an economically feasible mine could potentially have a mine life of 20–30 years.

### Q: What will you be doing with the rock that doesn't have lithium?

A: Mined rock without the desired lithium content is expected to be placed in designated onsite storage facilities or transported to Martin Marietta's adjacent quarry where the material can be processed and sold as construction aggregate. A royalty fee for each ton of aggregate sold by Martin Marietta will be paid to Albemarle, which plans to transfer the royalty to a non-profit entity that focuses on funding initiatives to support Kings Mountain and the surrounding communities.

### Q: What is actually being produced by the mine and where does it go?

A: Once mined, lithium-bearing-ore is transported to an on-site mineral processing facility to separate the valuable lithium minerals (spodumene) from the non-valuable minerals to create spodumene concentrate that will contain about 6% lithium oxide.

Albemarle will ship the spodumene concentrate to an offsite conversion facility via truck or rail for further processing.

### Q: Is Albemarle going to reuse the lake? Is the lake a natural feature?

A: The lake is not a natural feature and is a result of past open pit mining activity at the site. The mine's pit has gradually accumulated rainwater since mining operations ceased in the early 1990s. Albemarle is removing the water from the pit to prepare for mining operations. We started the dewatering process in early April and expect the process to take 18 months in total. Albemarle is treating and discharging water under the limits of a state-issued National Pollution Discharge Elimination System (NPDES) permit which is required to protect downstream water resources.

### Q: How do I provide comments and feedback?

A: Visit [albemarlekingsmountain.com](http://albemarlekingsmountain.com) or email [kmcommunity@albemarle.com](mailto:kmcommunity@albemarle.com).

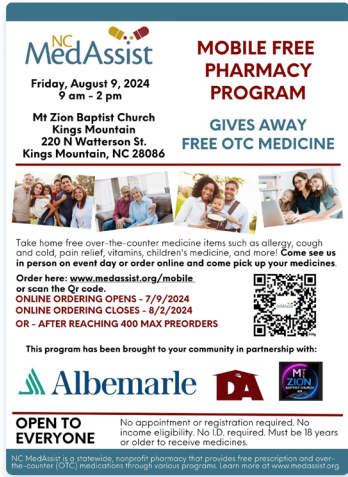
Visit the [Resource Center](#) to find more information about the proposed mine plan.





# Community Events

## Albemarle to Join NC MedAssist in Mobile Free Pharmacy Program



On Friday, August 9, Albemarle will join NC MedAssist at the Mt. Zion Baptist Church (220 N. Watterson Street, Kings Mountain), for the Mobile Free Pharmacy Program.

The Mobile Free Pharmacy provides free, over-the-counter medications to individuals and families that could not otherwise afford basic medications, such as vitamins, allergy medicine and pain relievers.

Online ordering is available from July 9 through August 2, or until 400 pre-orders are reached. You can order online by visiting [www.medassist.org/mobile](http://www.medassist.org/mobile).

The primary purpose of the event is to identify participants who may qualify for the NC MedAssist Free Prescription Pharmacy Program, a statewide program for uninsured North Carolina residents who fall at or below the Federal Poverty Level. NC MedAssist collaborates with community partners to organize free mobile events throughout the state.

This event is open to everyone, and no appointment or registration is required. You must be 18 or older to receive medication.

## June 11 Community Open House

On the evening of June 11, Albemarle hosted a community open house at the H. Lawrence Patrick Senior Center. With nearly 70 community members in attendance, Albemarle employees discussed the responsible mining standards and features that are being incorporated into the plan, the mine's proposed layout, material storage, permitting and more..

An interactive tool showing visualizations from various locations around Kings Mountain was available for people to see what the visual impacts would be to the community. Overall, attendees were curious about the project and came to learn about Albemarle and the reopening of the mine. When asked, people said they learned a lot and were able to get the questions they came for answered.



Click [this link](#) to watch the presentation from the open house. If you have questions about the reopening of the Kings Mountain Mine, visit [albemarlekingsmountain.com](http://albemarlekingsmountain.com) or email [kmcommunity@albemarle.com](mailto:kmcommunity@albemarle.com).

## Albemarle Celebrates Juneteenth with Kings Mountain Community

On Saturday, June 22, Albemarle Kings Mountain partnered with the Davidson Association to present the Juneteenth Celebration in Patriot's Park. Over 2,000 community members attended this family-friendly event, enjoying a live band, visiting eight food trucks and engaging with 38 local vendors. Albemarle's Cindy Estridge had the opportunity to talk with the community about the mine and future operations.



### Upcoming Events *Calendar* ▶

#### **KINGS MOUNTAIN MINE TOUR: JULY 11 AND 16**

The 45-minute tour includes history, geology and current information on the pre-feasibility studies that have been completed, with plenty of opportunities to ask questions. Tour attendees will meet at the Albemarle Project Center (129 W. Mountain Street), and travel together by van to the mine site. Times vary and registration is required, contact Cindy Estridge at [cynthia.estridge@albemarle.com](mailto:cynthia.estridge@albemarle.com). Be sure to check out [our website](#) to get the latest tour dates and times!



**Visit the Albemarle Kings Mountain website** ▶

**Tell us how we're doing** ▶

**Sign up for future newsletters!** ▶

Albemarle leads the world in transforming essential resources into critical ingredients for mobility, energy, connectivity and health. We partner to pioneer new ways to move, power, connect and protect with people and planet in mind, enabling a more resilient world. Our global headquarters is approximately 35 miles from Kings Mountain in Charlotte, NC.

For more information visit [albemarlekingsmountain.com](http://albemarlekingsmountain.com)

© 2024 by Albemarle Corporation. All rights reserved.  
The Albemarle logo is a registered trademark of Albemarle Corporation.