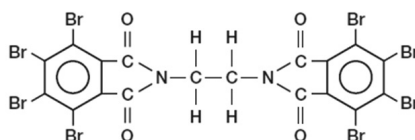


# SAYTEX® BT-93W FLAME RETARDANT

## DESCRIPTION

ethylenebistetra bromophthalimide

SAYTEX BT-93W flame retardant is a unique white-colored additive that combines stable, aromatic bromine with an imide structure.



## APPLICATIONS

SAYTEX BT-93W flame retardant provides premium performance in a wide range of applications. It finds use in polyolefins, high-impact polystyrene (HIPS), thermoplastic polyesters (PBT, PET, etc.), polycarbonate and elastomers.

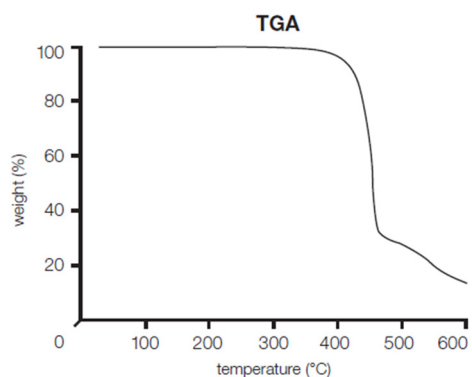
## BENEFITS AND FEATURES

SAYTEX BT-93W flame retardant has outstanding thermal and UV stability. Its white color allows use in color-sensitive applications. Its thermal stability allows use in engineering resins like polyesters and polyamides. SAYTEX BT-93W flame retardant is also non-blooming. This feature allows use in such critical applications as polyolefin films where good heat sealability is required. Its excellent wet electrical properties also make it ideal for wire and cable applications.

## TYPICAL PROPERTIES\*

% Bromine (theoretical)	67.2
Melt range (°C)	460
Molecular weight	951.5
Appearance/form	White/powder
Specific gravity	2.77
Dielectric constant (1 MHz)	1.17
Dissipation factor (1 MHz)	0.03

## TYPICAL PROPERTIES\*



Bulk density (Hosokawa powder tester, lb/ft<sup>3</sup>, [Kg/m<sup>3</sup>])

Packed 55 [875]

Aerated 30 [474]

Average particle size (μ) 2.81

Refractive index 1.79

Solubility (weight % at 25°C)

Water < 0.01

Acetone < 0.01

Methanol < 0.01

Toluene < 0.01

TGA (TA Instrument model 2950, 10°C/min, under N<sub>2</sub>)

1% weight loss, °C 336

5% weight loss, °C 410

10% weight loss, °C 426

50% weight loss, °C 457

90% weight loss, °C >600

\*These properties are typical but do not constitute a specification either in part or as a whole. Specification data is available on request from sales, customer service or customer technical service.

## CHEMICAL REGISTRATION NUMBERS

CAS: 32588-76-4  
EINECS: 2511186  
MITI: 5-5550

## RESPONSIBLE CARE

Albemarle is committed to the safety and well-being of our customers, employees and the community at large. Safety Data Sheets (SDS) are available upon request.



NORTH AMERICA 4250 Congress Street, Suite 900 • Charlotte, NC 28209 • Tel: +1 980 299 5700  
EUROPE Parc Scientifique Einstein, Rue du Bosquet 9, 1348 • Louvain-la-Neuve, Belgium • Tel: +32 10 48 17 11  
LATIN AMERICA Av. Brigadeiro Faria Lima, 1461 – sala 131-B • Sao Paulo, SP Brazil, 01451-001 • Tel: +55 11 99655-2288  
CHINA Room 3202, No. 757 Mengzi Road, Gopher Center, Huangpu District • Shanghai, PRC. 200023 • Tel: 86.21.6103.8666

The information presented herein is believed to be accurate and reliable, but is presented without guarantee or responsibility on the part of Albemarle Corporation and its subsidiaries to ensure the accuracy or reliability of the information. It is the responsibility of the user to comply with all applicable laws and regulations and to provide for a safe workplace. The user should consider all information contained herein only as a guide, and should take precautions that the user considers necessary or prudent to promote a safe work environment, such as considering all applicable health and safety hazards, developing safe work practice procedures and properly instructing employees. Further, nothing contained herein shall be taken as an inducement or recommendation to manufacture or use any of the materials or processes mentioned herein in violation of existing or pending patents.